

Dear Colleagues,

I am pleased to present you with this year's statistical report on international students and scholars at Michigan State University. The Office for International Students and Scholars (OISS) is responsible for serving MSU's international community and prepares this comprehensive report annually. Included with the statistics is a list of the some of the activities that OISS has engaged in over the past year.

- OISS hosted a reception with President Lou Anna K. Simon and distinguished members of the community of East Lansing to honor the presence of international students at MSU.
- This year marks the fourth year for the International Student Essay Contest. This contest enabled international students to write about their experiences on our campus and in our community. The top essays from last year can be found on our website.
- Community Volunteers for International Programs (CVIP) collaborated with the MSU Union to present the annual Global Festival. This tradition brings more than 4,000 members of the community of Greater Lansing into contact with MSU international students in a "visit the world in a day" cultural program.
- The weekly International Coffee Hour continues to be a popular tradition for gathering, conversation, and the opportunity to make friends from around the world.

All these activities and many more, we believe, have helped in making MSU a welcoming and comfortable place for international students to pursue their academic goals. It is a privilege for our staff to serve the international community. In the pages that follow, you will find a wealth of statistical information on the international student and scholar population at MSU.



Peter Briggs, Director

2006 Highlights

1. Enrollment numbers:

- More than 1,000 new international students enrolled at MSU in fall 2006, representing an increase of around 25% over fall 2005.
- There was an overall 7.1% increase in the total number of international students from fall 2005 (3293) to fall 2006 (3526).
- The enrollment of international graduate students increased by 4.3%. International graduate students consist of 39.9% of the total number of MSU full-time graduate students.
- The number of undergraduate international students increased by 11.4%. International undergraduate students are 3.6% of MSU's full-time undergraduate enrollment.
- In Fall 2006, international students represented 7.8% of all MSU students.

2. Sending countries:

- Asia sends the most international students to MSU. More than 55% of MSU's international students come from four countries: Korea (794), China (600), India (371), and Taiwan (206).
- In academic year 2005-06, there was a decrease of 5.4% in the number of students from Korea from 2004-05.
- There was a decrease of 3.4% in the number of students from Canada from academic year 2005 to 2006.
- In Fall 2006, students came from 134 countries compared to 127 in Fall 2005.

3. The Colleges of Business (613), Natural Science (590), Engineering (523), and Arts and Letters (416) enroll the largest number of international students.

4. The number of visiting scholars this past year was 1052, representing 89 countries.

5. MSU's international students and scholars contributed more than \$90 million to the economy of greater Lansing, according to the Institute of International Education's formula for calculating the economic impact of international students.

This publication was compiled and designed by Ravi Ammigan, International Advisor in OISS. Special thanks go to Lucille Wright in the Office of the Registrar and Nancy Rademacher for their assistance in preparing this data. Throughout this report, unless otherwise indicated, numbers were obtained from MSU's Office of the Registrar and the Open Doors 2005-06 report published by the Institute for International Education.

INTERNATIONAL STUDENTS BY COUNTRY, GENDER, AND LEVEL OF STUDY

FALL 2006 SEMESTER

COUNTRY	GRADUATE			NON-DEGREE *			UNDERGRADUATE			TOTAL	%
	Female	Male	STotal	Female	Male	STotal	Female	Male	STotal		
Albania	2	1	3	0	0	0	0	0	0	3	0.09%
Angola	0	1	1	0	0	0	0	0	0	1	0.03%
Argentina	7	4	11	0	0	0	0	0	0	11	0.31%
Armenia	1	1	2	1	2	3	0	0	0	5	0.14%
Aruba	0	0	0	0	0	0	1	0	1	1	0.03%
Australia	3	5	8	3	2	5	2	0	2	15	0.43%
Austria	1	1	2	2	1	3	0	0	0	5	0.14%
Azerbaijan	0	0	0	0	1	1	0	0	0	1	0.03%
Bahrain	0	0	0	0	0	0	1	0	1	1	0.03%
Bangladesh	2	0	2	0	0	0	0	0	0	2	0.06%
Barbados	1	0	1	2	0	2	0	0	0	3	0.09%
Belarus	2	2	4	0	0	0	0	0	0	4	0.11%
Belgium	0	2	2	1	1	2	0	0	0	4	0.11%
Belize	0	0	0	0	0	0	2	3	5	5	0.14%
Benin	0	1	1	0	0	0	0	1	1	2	0.06%
Bolivia	0	1	1	0	0	0	2	3	5	6	0.17%
Botswana	2	0	2	0	0	0	0	0	0	2	0.06%
Brazil	7	7	14	0	2	2	5	8	13	29	0.82%
Bulgaria	2	1	3	1	0	1	0	1	1	5	0.14%
Burkina	0	2	2	0	0	0	0	0	0	2	0.06%
Burma (Myanmar)	1	0	1	0	0	0	0	1	1	2	0.06%
Cambodia	1	0	1	0	0	0	0	0	0	1	0.03%
Cameroon	1	1	2	0	0	0	0	3	3	5	0.14%
Canada	36	31	67	11	7	18	26	25	51	136	3.86%
Chile	4	6	10	2	0	2	1	2	3	15	0.43%
China	238	260	498	7	3	10	52	40	92	600	17.02%
Colombia	6	7	13	1	0	1	1	0	1	15	0.43%
Congo	0	0	0	1	0	1	0	0	0	1	0.03%
Costa Rica	1	2	3	0	0	0	0	1	1	4	0.11%
Cote D'Ivoire	1	0	1	0	0	0	0	0	0	1	0.03%
Cyprus	1	2	3	0	0	0	0	0	0	3	0.09%
Czech Republic	2	1	3	3	0	3	0	1	1	7	0.20%
Denmark	0	0	0	0	3	3	0	0	0	3	0.09%
Dominican Republic	0	1	1	0	1	1	0	1	1	3	0.09%
Ecuador	2	3	5	2	1	3	0	4	4	12	0.34%
Egypt	1	4	5	0	0	0	0	1	1	6	0.17%
El Salvador	0	1	1	0	0	0	4	4	8	9	0.26%
Eritrea	0	2	2	0	0	0	0	0	0	2	0.06%
Ethiopia	1	3	4	0	0	0	1	0	1	5	0.14%
Finland	0	0	0	0	1	1	0	0	0	1	0.03%
France	5	8	13	5	12	17	1	1	2	32	0.91%
Gambia, The	0	1	1	0	0	0	0	0	0	1	0.03%
Georgia	1	2	3	0	1	1	0	0	0	4	0.11%
Germany	10	15	25	9	8	17	2	3	5	47	1.33%
Ghana	3	7	10	1	0	1	0	1	1	12	0.34%
Greece	5	10	15	0	0	0	0	0	0	15	0.43%
Grenada	0	0	0	1	0	1	0	0	0	1	0.03%
Guatemala	3	4	7	0	0	0	0	2	2	9	0.26%
Honduras	1	1	2	0	1	1	1	1	2	5	0.14%
Hong Kong	9	8	17	0	0	0	24	25	49	66	1.87%
Hungary	1	0	1	0	0	0	0	0	0	1	0.03%
India	96	191	287	2	1	3	19	62	81	371	10.52%
Indonesia	1	7	8	0	0	0	16	11	27	35	0.99%
Iran	4	12	16	1	0	1	0	0	0	17	0.48%
Iraq	0	1	1	0	0	0	0	0	0	1	0.03%
Ireland	0	0	0	0	2	2	0	0	0	2	0.06%

Israel	1	5	6	0	0	0	1	0	1	7	0.20%
Italy	1	5	6	1	1	2	0	2	2	10	0.28%
Jamaica	2	3	5	2	1	3	1	0	1	9	0.26%
Japan	27	25	52	18	15	33	25	21	46	131	3.72%
Jordan	2	16	18	0	1	1	0	2	2	21	0.60%
Kazakhstan	0	1	1	0	1	1	14	12	26	28	0.79%
Kenya	7	14	21	1	1	2	1	4	5	28	0.79%
Kiribati	0	0	0	0	0	0	0	1	1	1	0.03%
Korea, Republic of	160	159	319	43	50	93	161	221	382	794	22.52%
Kuwait	1	1	2	0	0	0	9	9	18	20	0.57%
Latvia	0	0	0	0	0	0	0	1	1	1	0.03%
Lebanon	3	1	4	0	0	0	0	3	3	7	0.20%
Lithuania	0	1	1	0	0	0	0	0	0	1	0.03%
Macau	0	1	1	0	0	0	1	0	1	2	0.06%
Madagascar	0	1	1	0	0	0	0	1	1	2	0.06%
Malawi	1	2	3	1	1	2	0	0	0	5	0.14%
Malaysia	9	5	14	0	2	2	10	15	25	41	1.16%
Mali	1	0	1	0	1	1	1	3	4	6	0.17%
Mauritius	0	1	1	0	0	0	0	0	0	1	0.03%
Mexico	7	4	11	6	2	8	2	7	9	28	0.79%
Mongolia	0	0	0	0	1	1	0	0	0	1	0.03%
Morocco	1	1	2	0	1	1	0	0	0	3	0.09%
Mozambique	2	1	3	0	1	1	0	0	0	4	0.11%
Namibia	1	0	1	0	0	0	0	1	1	2	0.06%
Nauru	0	0	0	0	0	0	0	1	1	1	0.03%
Nepal	1	8	9	0	1	1	0	0	0	10	0.28%
Netherlands	1	3	4	0	3	3	4	1	5	12	0.34%
Netherlands Antilles	0	0	0	0	1	1	0	0	0	1	0.03%
New Zealand	0	2	2	0	0	0	0	0	0	2	0.06%
Niger	0	0	0	0	1	1	0	0	0	1	0.03%
Nigeria	3	5	8	0	0	0	3	15	18	26	0.74%
Norway	0	0	0	1	1	2	0	0	0	2	0.06%
Oman	0	0	0	0	0	0	0	1	1	1	0.03%
Pakistan	3	29	32	0	1	1	5	22	27	60	1.70%
Panama	0	0	0	0	0	0	1	2	3	3	0.09%
Paraguay	1	0	1	0	0	0	0	0	0	1	0.03%
Peru	3	12	15	0	1	1	2	2	4	20	0.57%
Philippines	13	8	21	1	0	1	0	2	2	24	0.68%
Poland	2	0	2	0	0	0	1	2	3	5	0.14%
Portugal	3	1	4	0	0	0	0	0	0	4	0.11%
Qatar	0	1	1	0	0	0	0	1	1	2	0.06%
Romania	10	5	15	0	1	1	0	0	0	16	0.45%
Russia	9	10	19	1	0	1	1	0	1	21	0.60%
Rwanda	0	5	5	0	0	0	0	0	0	5	0.14%
Saint Lucia	0	0	0	0	0	0	1	0	1	1	0.03%
Saudi Arabia	1	4	5	1	7	8	2	38	40	53	1.50%
Senegal	0	2	2	1	0	1	0	1	1	4	0.11%
Serbia and Montenegro	1	1	2	0	0	0	0	0	0	2	0.06%
Sierra Leone	0	1	1	0	0	0	0	0	0	1	0.03%
Singapore	4	6	10	1	0	1	5	13	18	29	0.82%
Slovak Republic	1	2	3	1	0	1	0	0	0	4	0.11%
Slovenia	1	1	2	1	0	1	0	0	0	3	0.09%
Somalia	0	0	0	1	0	1	0	0	0	1	0.03%
South Africa	3	2	5	3	0	3	1	1	2	10	0.28%
Spain	6	5	11	2	7	9	0	0	0	20	0.57%
Sri Lanka	5	8	13	0	0	0	3	1	4	17	0.48%
Sudan	1	0	1	0	0	0	0	0	0	1	0.03%
Sweden	1	0	1	0	0	0	0	1	1	2	0.06%
Switzerland	2	0	2	1	0	1	0	0	0	3	0.09%
Syria	0	0	0	0	0	0	0	3	3	3	0.09%
Taiwan	91	45	136	6	3	9	27	34	61	206	5.84%
Tanzania	0	2	2	1	0	1	0	2	2	5	0.14%

Thailand	21	21	42	6	0	6	4	2	6	54	1.53%
Trinidad and Tobago	3	1	4	0	0	0	0	2	2	6	0.17%
Tunisia	2	1	3	0	0	0	0	1	1	4	0.11%
Turkey	16	35	51	1	0	1	8	14	22	74	2.10%
Turkmenistan	0	0	0	1	0	1	0	0	0	1	0.03%
Uganda	0	1	1	1	1	2	0	0	0	3	0.09%
Ukraine	1	4	5	0	0	0	1	0	1	6	0.17%
United Arab Emirates	0	1	1	2	0	2	1	3	4	7	0.20%
United Kingdom	4	9	13	3	2	5	3	3	6	24	0.68%
Uruguay	1	1	2	0	1	1	0	1	1	4	0.11%
Uzbekistan	0	2	2	0	0	0	1	1	2	4	0.11%
Venezuela	2	1	3	0	0	0	3	4	7	10	0.28%
Vietnam	3	4	7	0	0	0	4	2	6	13	0.37%
West Bank	1	1	2	0	0	0	0	0	0	2	0.06%
Zambia	2	3	5	0	0	0	3	1	4	9	0.26%
Zimbabwe	2	7	9	1	0	1	2	1	3	13	0.37%
TOTAL	915	1128	2042	165	160	325	473	686	1159	3526	

GraduateTotal: 2042

Non-Degree Total*: 325

Undergraduate Total: 1159

Total Students: 3526

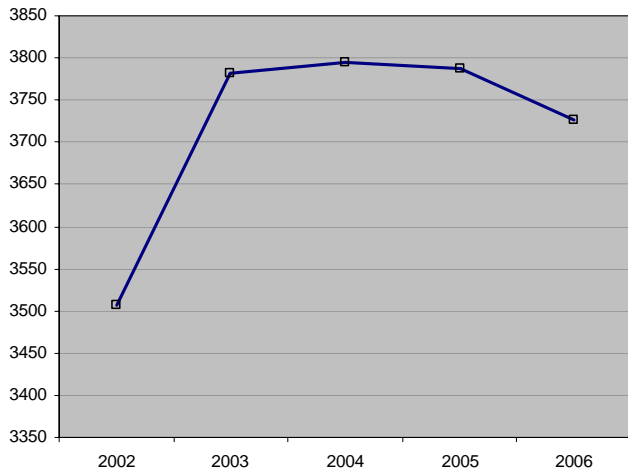
Total Countries represented: 134

* The Non-Degree category includes Lifelong Graduate and Undergraduate, Agricultural Technology, English Language, Graduate Certificate, Osteopathic Medicine, Veterinary Medicine, and Human Medicine

INTERNATIONAL STUDENTS BY REGIONAL TREND

ACADEMIC YEAR (FALL 05 - SUMMER 06)

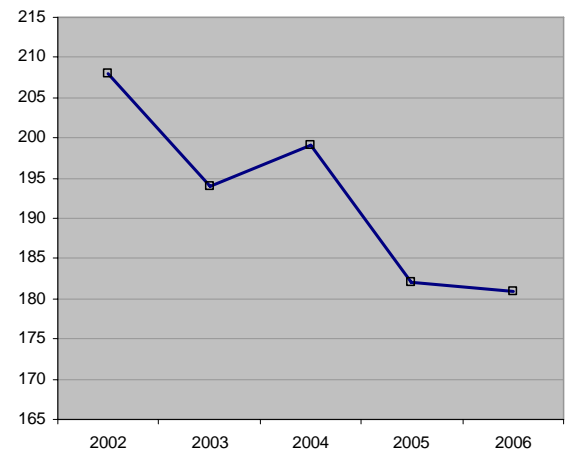
Region	2002	2003	2004	2005	2006	% Change 2002	% Change 2005
Africa	208	194	199	182	181	-26.7%	-0.5%
Asia	2359	2525	2625	2656	2571	9.0%	-3.2%
Europe	319	371	328	308	313	-1.9%	1.6%
Latin America	230	248	237	233	235	2.2%	0.9%
Middle East	210	223	217	198	226	7.6%	14.1%
North America	156	191	154	176	170	9.0%	-3.4%
Oceania	24	30	34	34	31	29.2%	-8.8%
	3506	3782	3794	3787	3727	6.3%	-1.6%



INTERNATIONAL STUDENTS BY REGION - AFRICA

ACADEMIC YEAR (FALL 05 – SUMMER 06)

	2002	2003	2004	2005	2006
East Africa					
Burundi	1	0	0	0	0
Eritrea	1	1	0	1	1
Ethiopia	11	8	8	6	6
Kenya	56	44	36	30	29
Madagascar	0	0	0	1	1
Malawi	5	2	2	1	1
Mauritius	0	0	0	1	1
Mozambique	2	5	5	6	4
Rwanda	12	12	10	5	6
Tanzania	2	3	1	4	5
Uganda	2	2	1	2	3
Zambia	2	4	3	2	5
Zimbabwe	17	20	20	14	19
Central					
Angola	0	0	0	1	2
Cameroon	3	3	2	3	5
Chad	0	0	0	0	1
Gabon	0	0	1	1	0
Ghana	7	8	21	19	17
Zaire (Congo)	1	0	0	0	0
North					
Algeria	1	1	0	0	0
Egypt	17	18	19	14	7
Morocco	4	2	0	2	2
Sudan	1	0	1	1	1
Tunisia	2	0	0	2	3
South					
Botswana	7	7	7	2	3
Namibia	0	1	4	4	3
South Africa	17	15	14	13	10
Swaziland	2	2	2	0	0
West					
Benin	1	1	1	1	2
Burkina Faso	1	0	0	1	0
Cote D'Ivoire	2	4	4	3	2
Gambia, The	0	0	0	0	1
Guinea	0	0	1	1	0
Mali	5	3	5	5	6
Niger	2	1	0	0	0
Nigeria	18	24	26	29	32
Senegal	5	2	3	4	2
Sierra Leone	1	1	1	2	1
Togo	0	0	1	1	0
	208	194	199	182	181



TOP 5 COUNTRIES

At MSU

Nigeria
Kenya
Zimbabwe
Ghana
South Africa

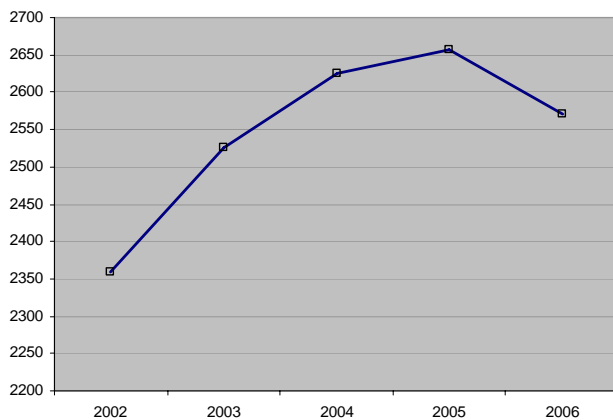
In USA

Kenya
Nigeria
Ghana
South Africa
Zimbabwe

INTERNATIONAL STUDENTS BY REGION - ASIA

ACADEMIC YEAR (FALL 05 – SUMMER 06)

	2002	2003	2004	2005	2006
East Asia					
China	478	529	571	569	550
Hong Kong	68	68	74	67	65
Japan	201	213	194	181	155
Korea, Republic of.	711	784	880	963	911
Macau	1	2	3	4	2
Mongolia	0	0	0	0	1
Taiwan	182	184	161	169	190
South & Central					
Bangladesh	7	5	6	3	3
Bhutan	1	0	0	0	0
India	344	411	411	390	382
Kazakhstan	1	1	4	4	6
Kyrgyzstan	0	1	0	1	1
Nepal	15	12	13	13	10
Pakistan	68	57	52	54	61
Sri Lanka	13	11	10	11	16
Turkmenistan	0	0	0	0	1
Uzbekistan	3	1	4	2	4
South East					
Burma (Myanmar)	1	2	2	2	2
Indonesia	60	61	51	44	44
Kampuchea (Cambodia)	1	2	2	2	0
Laos	1	0	1	0	0
Malaysia	57	53	56	52	46
Philippines	21	27	31	29	27
Singapore	27	31	29	30	29
Thailand	95	69	63	57	53
Vietnam	3	1	7	9	12
	2359	2525	2625	2656	2571

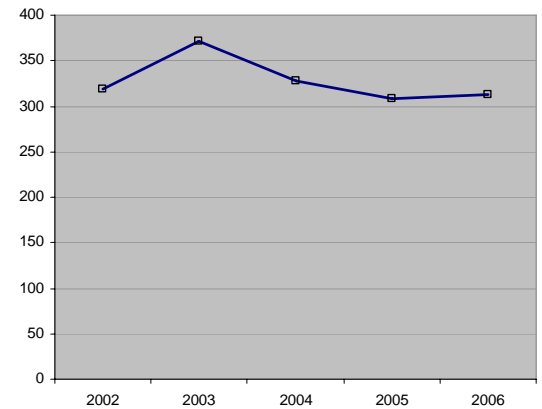


TOP 5 COUNTRIES	
At MSU	In USA
Korea, Rep. of	India
China	China
India	Korea, Rep. of
Taiwan	Japan
Japan	Taiwan

INTERNATIONAL STUDENTS BY REGION - EUROPE

ACADEMIC YEAR (FALL 05 – SUMMER 06)

	2002	2003	2004	2005	2006
Eastern Europe					
Albania	5	6	4	4	3
Armenia	2	3	3	3	4
Azerbaijan	0	1	1	0	0
Belarus	0	1	0	1	3
Bosnia-Herzegovina	1	1	1	1	0
Bulgaria	2	6	5	2	5
Croatia	0	3	1	2	0
Czech Republic	5	4	8	6	9
Estonia	1	1	0	1	1
Georgia	4	5	8	5	5
Hungary	4	5	2	2	3
Latvia	0	0	0	1	1
Macedonia	1	1	0	0	0
Moldova	1	2	2	1	1
Poland	12	10	9	9	7
Romania	20	20	19	21	20
Russia	36	41	31	27	26
Serbia and Montenegro	0	0	0	4	3
Slovak Republic	3	5	4	4	3
Slovenia	3	5	2	2	2
Ukraine	10	12	11	7	9
Yugoslavia, Former	6	6	4	0	0
Western Europe					
Austria	3	2	2	7	6
Belgium	4	5	3	5	5
Denmark	7	8	2	2	2
Finland	2	3	2	1	2
France	29	29	29	22	24
Germany	33	57	55	63	56
Greece	19	19	17	16	19
Iceland	1	2	0	0	0
Ireland	6	8	10	7	9
Italy	16	11	11	11	10
Lithuania	1	2	4	4	2
Netherlands	20	17	14	14	14
Norway	4	7	5	2	2
Portugal	1	2	1	2	2
Spain	13	14	13	17	19
Sweden	4	3	5	1	2
Switzerland	3	3	3	6	5
United Kingdom	37	41	37	25	29
	319	371	328	308	313



TOP 5 COUNTRIES

At MSU

Germany
United Kingdom
Russia
France
Romania

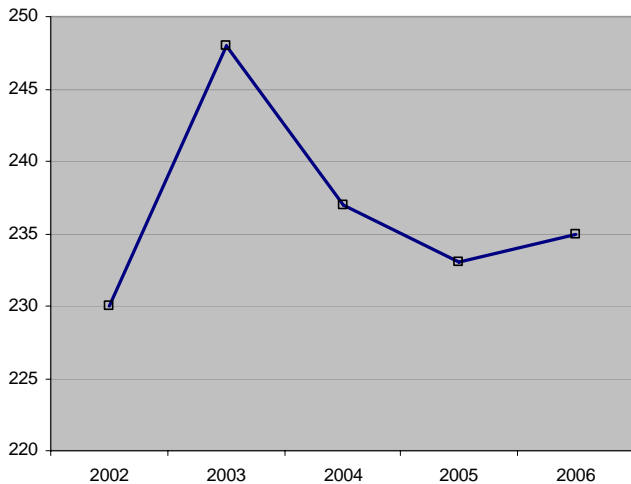
In USA

Germany
United Kingdom
France
Russia
Bulgaria

INTERNATIONAL STUDENTS BY REGION – LATIN AMERICA

ACADEMIC YEAR (FALL 05 – SUMMER 06)

	2002	2003	2004	2005	2006
Caribbean					
Antigua and Barbuda	0	0	0	1	1
Aruba	0	0	0	0	1
Bahamas	3	1	1	0	1
Barbados	2	2	5	3	4
Cuba	1	0	0	0	0
Dominica	0	0	0	0	1
Dominican Republic	2	3	2	2	4
Haiti	2	1	1	0	0
Jamaica	9	18	12	9	8
Netherlands Antilles	1	1	0	0	1
Saint Lucia	2	2	1	1	1
Trinidad and Tobago	3	3	5	6	4
Central America					
Belize	0	0	1	2	4
Costa Rica	2	6	5	5	6
El Salvador	0	0	1	4	7
Guatemala	7	6	9	7	8
Honduras	3	5	8	7	6
Mexico	31	36	31	42	34
Nicaragua	1	1	3	2	0
Panama	6	4	4	3	2
South America					
Argentina	13	19	25	20	16
Bolivia	2	2	5	5	7
Brazil	51	43	42	41	42
Chile	17	17	13	11	12
Colombia	15	20	13	13	13
Ecuador	20	19	11	8	11
Paraguay	2	3	3	1	1
Peru	12	12	12	19	23
Uruguay	9	9	11	5	5
Venezuela	14	15	13	16	12
	230	248	237	233	235



TOP 5 COUNTRIES

At MSU

Brazil
Mexico
Peru
Argentina
Colombia

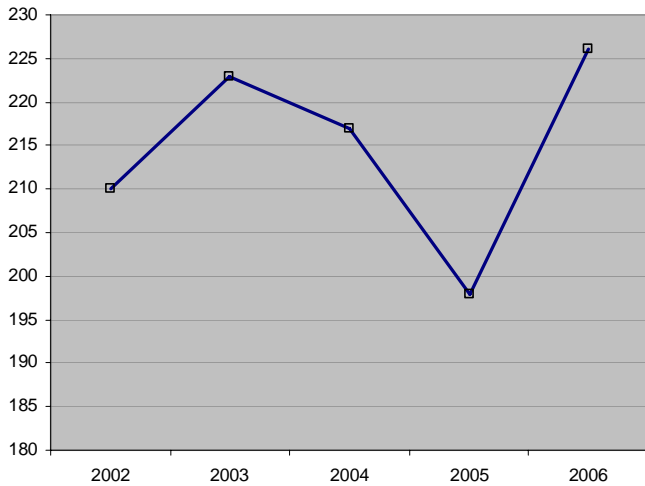
In USA

Mexico
Brazil
Colombia
Venezuela
Jamaica

INTERNATIONAL STUDENTS BY REGION – MIDDLE EAST

ACADEMIC YEAR (FALL 05 – SUMMER 06)

	2002	2003	2004	2005	2006
Middle East					
Afghanistan	0	0	0	1	0
Cyprus	8	6	6	5	5
Iran	20	24	21	21	21
Iraq	0	0	1	1	0
Israel	5	11	9	10	9
Jordan	16	15	23	21	21
Kuwait	9	8	15	16	18
Lebanon	12	14	11	13	11
Oman	3	2	1	1	2
Qatar	5	4	4	4	3
Saudi Arabia	33	41	31	23	43
Syria	1	2	2	3	4
Turkey	84	83	85	68	79
United Arab Emirates	13	11	7	9	8
West Bank	1	1	1	2	2
Yemen	0	1	0	0	0
	210	223	217	198	226



TOP 5 COUNTRIES

At MSU

Turkey
Saudi Arabia
Jordan
Iran
Kuwait

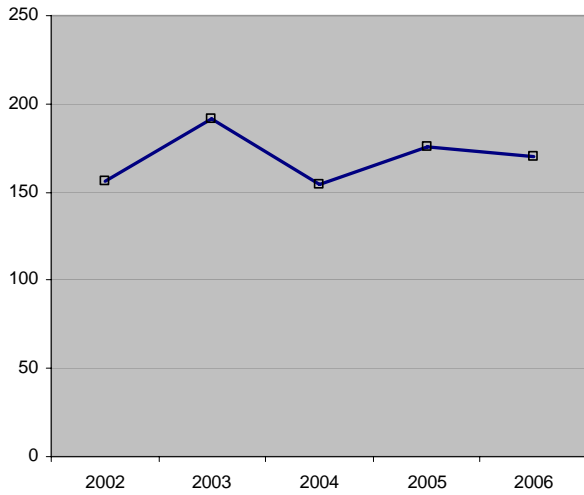
In USA

Turkey
Saudi Arabia
Israel
Iran
Lebanon

INTERNATIONAL STUDENTS BY REGION – NORTH AMERICA

ACADEMIC YEAR (FALL 05 – SUMMER 06)

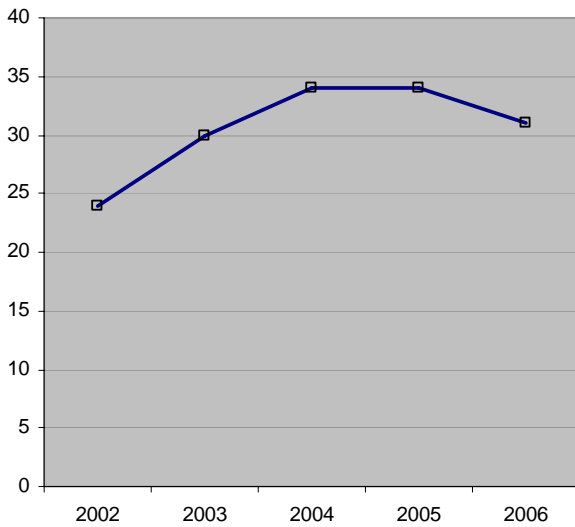
	2002	2003	2004	2005	2006
North America					
Bermuda	0	0	0	0	1
Canada	156	191	154	176	169
	156	191	154	176	170



INTERNATIONAL STUDENTS BY REGION – OCEANIA

ACADEMIC YEAR (FALL 05 – SUMMER 06)

	2002	2003	2004	2005	2006
Oceania					
Australia	15	23	23	26	23
Kiribati	0	0	0	0	1
Nauru	0	0	0	1	1
New Zealand	9	7	11	7	5
Papua New Guinea	0	0	0	0	1
	24	30	34	34	31

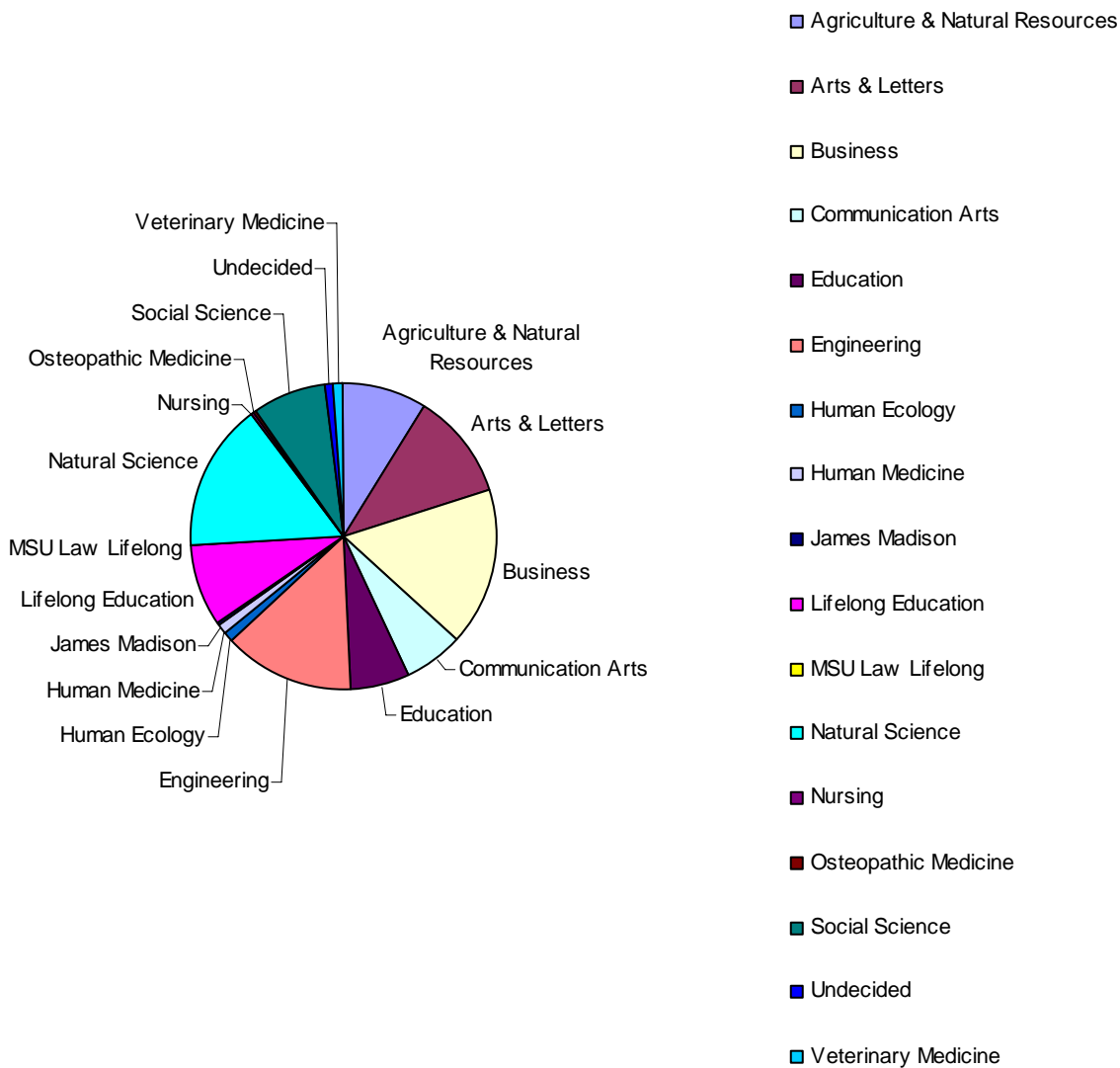


TOP 5 COUNTRIES	
At MSU	In USA
Australia	Australia
New Zealand	New Zealand
Kiribati	Fiji
Nauru	Tonga
Papua New Guinea	Micronesia, Fed. States of

INTERNATIONAL STUDENTS BY COLLEGE ENROLLMENT TREND

ACADEMIC YEAR (FALL 05 – SUMMER 06)

College	2002	2003	2004	2005	2006	% Change from 2002	% Change from 2005
Agriculture & Natural Resources	310	328	326	311	336	8.4%	8.0%
Arts & Letters	338	299	378	418	416	23.1%	-0.5%
Business	533	577	616	638	613	15.0%	-3.9%
Communication Arts	261	274	265	229	242	-7.3%	5.7%
Education	186	203	226	229	226	21.5%	-1.3%
Engineering	590	602	550	519	523	-11.4%	0.8%
Human Ecology	86	89	86	85	31	-64.0%	-63.5%
Human Medicine	18	22	26	34	37	105.6%	8.8%
James Madison	1	5	11	12	12	1100.0%	0.0%
Lifelong Education	381	534	368	380	325	-14.7%	-14.5%
MSU Law Lifelong	2	5	0	0	0		
Natural Science	548	557	594	574	590	7.7%	2.8%
Nursing	0	2	5	7	9		28.6%
Osteopathic Medicine	8	6	8	7	5	-37.5%	-28.6%
Social Science	196	223	249	249	295	50.5%	18.5%
Undecided	25	24	44	47	29	16.0%	-38.3%
Veterinary Medicine	23	32	42	48	41	78.3%	-14.6%
Total	3506	3782	3794	3787	3730	6.4%	-1.5%



INTERNATIONAL STUDENTS BY COLLEGE, MAJOR, AND LEVEL OF STUDY

ACADEMIC YEAR (FALL 05 – SUMMER 06)

College/Major	Level of Study			TOTAL
	GR	ND*	UN	
Agriculture & Natural Resources				
Agribusiness Management			4	4
Agricultural & Extension Ed	2			2
Agricultural Economics	47			47
Animal Sci-Envir Toxicology	1			1
Animal Science	11			11
Biosystems Engineering	8			8
Comm, Ag, Rec & Res Studies	14			14
Construction Management	17		2	19
Crop and Soil Sciences	15			15
Crop&Soil Sci-Envir Toxicology	4			4
Dairy Production		1		1
Dietetics			7	7
Entomology	4			4
Environmental Economics&Policy			2	2
Fisheries and Wildlife	15		1	16
Food Industry Management			14	14
Food Science	14		8	22
Food Science-Envir Toxicology	5			5
Forestry	14			14
Horticulture	8		1	9
Human Nutrition	3			3
Interior Design			10	10
Interior Design&Facilities Mgt	1			1
Landscape Architecture			1	1
Packaging	49		10	59
Park, Recreation & Tourism Res	15		2	17
Plant Breeding & Genetics-CSS	6			6
Plant Breeding & Genetics-For	2			2
Plant Breeding & Genetics-Hrt	3			3
Plant Pathology	1			1
Resource Dev - Urban Studies	1			1
Resource Dev-Envir Toxicology	1			1
Resource Development	2			2
Turfgrass Management-Golf		10		10
	263	11	62	336
	GR	ND	UN	TOTAL
Arts & Letters				
African American & African Std	3			3
American Studies	8			8
Applied Spanish Linguistics	2			2
Art History and Visual Culture			2	2
English	18		4	22
English Language Center		29		29
French	1			1
French, Language & Literature	3			3
German Studies	4			4
Hispanic Cultural Studies	10			10
Hispanic Literatures	2			2
History	8		1	9
History of Art	1			1
Humanities-Prelaw			2	2
Interdisciplinary Humanities			1	1
Language Program		136		136

Linguistics	28		4	32
Music Composition	7			7
Music Conducting	3			3
Music Education	3		2	5
Music Performance	77		5	82
Music Therapy	9		8	17
Philosophy	4			4
Second Language Studies	6			6
Studio Art	1		7	8
Tch Eng to Speakers Other Lang	16			16
Theatre			1	1
	214	165	37	416
	GR		UN	TOTAL
Business				
Accounting	37		64	101
Business Administration	72			72
Business Information Systems	2			2
Economics	12			12
Finance	46		63	109
Foodservice Management	4			4
General Business Admin-Prelaw			17	17
General Management			55	55
Hospitality Business	9		64	73
Human Resource Management			6	6
Integrative Management	32			32
Logistics	4			4
Marketing	12		52	64
Operations and Sourcing Mgt	4			4
Org Behav-Human Resource Mgt	2			2
Strategic Management	1			1
Supply Chain Management	4		51	55
	241		372	613
	GR		UN	TOTAL
Communication Arts				
Advertising	19		56	75
Audiology and Speech Sciences	2		2	4
Comm Arts & Sci-Mass Media	20			20
Comm Arts&Sci-Media&Info Stdys	5			5
Communication	16		19	35
Human Environment:Design & Mgt	2			2
Journalism	8		5	13
Public Relations	10			10
Retailing	9		10	19
Telecomm, Info Studies & Media	18		41	59
	109		133	242
	GR		UN	TOTAL
Education				
Counseling	4			4
Curric Teaching & Ed Policy	38			38
Curriculum and Teaching	17			17
Education	6		5	11
Educational Policy	7			7
Educational Technology	22			22
Higher, Adult, & Lifelong Educ	10			10
K-12 Ed Administration	46			46
Kinesiology	3		7	10

Learning, Technology & Culture	19			19
Literacy Instruction	1			1
Measurement& Quantitative Meth	28			28
Rehabilitation Counseling	1			1
Rehabilitation Counselor Educ	4			4
School Psychology	2			2
Special Ed-Deaf Education			1	1
Special Education	3			3
Student Affairs Administration	2			2
	213		13	226
	GR		UN	TOTAL
Engineering				
Applied Engineering Sciences			4	4
Biosystems Engineering			1	1
Chemical Engineering	32		12	44
Civil Engineering	32		11	43
Computer Engineering			20	20
Computer Science	68		23	91
Electrical Engineering	102		53	155
Engineering - No Preference			8	8
Engineering Mechanics	4			4
Environmental Engineering	21			21
Materials Sci and Engineering	16		2	18
Mechanical Engineering	69		45	114
	344		179	523
	GR		UN	TOTAL
Human Ecology				
Apparel and Textile Design			4	4
Child Development	5			5
Community Services	1			1
Family and Child Ecology	8			8
Family Community Services			2	2
Family Studies	4			4
Human Environment:Design & Mgt	5			5
Human Nutrition	1			1
Youth Development	1			1
	25		6	31
	GR			TOTAL
Human Medicine				
Biochemistry & Molecular Biol	6			6
Bioethics,Humanities & Society	2			2
Epidemiology	17			17
Human Medicine	4			4
Microbiol & Molecular Genetics	2			2
Pharmacology and Toxicology	4			4
Physiology	2			2
	37			37
	UN			TOTAL
James Madison				
International Relations	11			11
James Madison	1			1
	12			12

	GR		UN	TOTAL
Natural Science				
Applied Mathematics	19			19
Applied Statistics	5			5
Astrophysics			4	4
Astrophysics and Astronomy	4			4
Biochem&Molecular Biol/Biotech			18	18
Biochem&Molecular Biol/Env Tox	2			2
Biochemistry & Molecular Biol	27		18	45
Biological Science-Interdept			2	2
Biomedical Lab Operations	1			1
Cell and Molecular Biology	18			18
Chemical Physics	2			2
Chemistry	126		5	131
Chemistry-Envir Toxicology	1			1
Clinical Laboratory Sciences	3		1	4
Entomology	1			1
Environmental Geosciences	1			1
Genetics	27			27
Geological Sciences	4		3	7
Human Biology			19	19
Human Nutrition	2			2
Industrial Mathematics	4			4
Industrial Microbiology	4			4
LBS Biochemistry			1	1
LBS Human Biology			1	1
LBS Medical Technology			1	1
Mathematics	37		7	44
Mathematics Education	2			2
Medical Technology			12	12
Microbiol & Molecular Genetics	15			15
Microbiology			2	2
Natural Science-No Preference			2	2
Neuroscience	5			5
Physics	71		10	81
Physiology	4		2	6
Plant Biology	7			7
Predental			3	3
Premedical			21	21
Statistics	51			51
Zoology	7		5	12
Zoology-Envir Toxicology	3			3
	453		137	590
	GR		UN	TOTAL
Nursing				
Nursing	3		3	6
Pre nursing			3	3
	3		6	9
	GR	ND		TOTAL
Osteopathic Medicine				
Osteop Med - Dual Degree MSTP	1			1
Osteopathic Medicine Post Doc		4		4
	1	4		5
	GR		UN	TOTAL
Social Science				
Anthropology	3		2	5

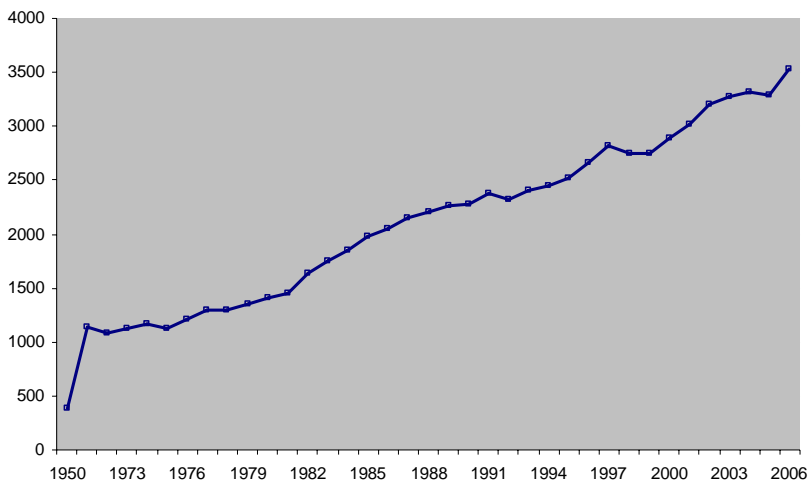
Clinical Social Work	1			1
Criminal Justice	22		5	27
Economics	47		60	107
Family Community Services			1	1
Forensic Science	1			1
Geographic Information Science	1		1	2
Geography	13		1	14
History	2			2
Inter Stdy Soc Sci:Global Appl	4			4
International Planning Studies	18			18
Intr Stdy S S-Public Plcy Stdy			1	1
Intr Stdy Soc Sci-Cmty Rel			1	1
Intr Stdy Soc Sci-Hm Res Scty			11	11
Intr Stdy Soc Sci-Intl Studies			3	3
Labor Relations & Human Res	10			10
Organizational & Cmty Practice	1			1
Political Science	12		8	20
Political Science-Prelaw			1	1
Psychology	10		18	28
Public Admin and Public Policy			2	2
Public Administration	1			1
Soc Sci-Industrial Rel Hum Res	2			2
Social Science-Social Work	2			2
Social Work	2		1	3
Sociology	11		1	12
Sociology-Urban Studies	1			1
Urban and Regional Planning	6		8	14
	170		125	295
	GR	ND	UN	TOTAL
Veterinary Medicine				
Comparative Med & Integr Biol	14			14
Food Safety	5			5
Large Animal Clinical Sciences	4			4
Pathology	6			6
Pharmacology and Toxicology	2			2
Physiology	2			2
Preveterinary			2	2
Small Animal Clinical Sciences	2			2
Veterinary Medicine	3			3
Veterinary Medicine Post Doc		1		1
	38	1	2	41
		ND		TOTAL
Lifelong Education				
High School Guest		2		2
Lifelong Education		323		323
		325		325
			UN	TOTAL
Undecided				
No Preference			29	29
			29	29

INTERNATIONAL STUDENTS BY COMPARATIVE ENROLLMENT

FALL 1971 – 2006 SEMESTERS

Year	Undergrad*	Masters*	Doctoral	Grad Prof*	Total Int'l	% of Total MSU
1950					390	2.5
1971	197	568	366	1	1132	2.7
1972	227	500	350	2	1079	2.6
1973	292	474	355	2	1123	2.7
1974	284	533	353	2	1172	2.7
1975	207	540	373	4	1124	2.5
1976	246	534	426	6	1212	2.8
1977	276	529	483	5	1293	2.9
1978	268	522	497	4	1291	3
1979	295	536	513	3	1347	3
1980	302	559	541	4	1406	3.1
1981	330	614	502	4	1450	3.4
1982	415	676	547	1	1639	4
1983	470	678	597	2	1747	4.4
1984	510	670	671	2	1853	4.6
1985	546	672	764	3	1985	4.8
1986	477	730	842	2	2051	4.9
1987	462	801	883	2	2148	5.1
1988	491	815	895	0	2201	5.2
1989	435	872	958	5	2270	5.3
1990	442	852	983	5	2282	5.3
1991	468	866	1032	6	2372	5.6
1992	463	853	997	9	2322	5.8
1993	532	807	1058	9	2406	6.1
1994	672	778	987	7	2444	6.1
1995	793	753	968	7	2521	6.2
1996	867	830	963	4	2664	6.4
1997	977	878	964	4	2823	7.1
1998	911	834	996	6	2747	6.8
1999	847	845	1052	4	2748	6.4
2000	906	889	1089	4	2888	6.7
2001	923	951	1141	6	3021	6.8
2002	963	986	1246	7	3202	7.1
2003	1046	936	1281	15	3278	7.4
2004	1145	839	1318	13	3315	7.4
2005	1211	745	1328	9	3293	7.3
2006	1333	833	1353	7	3526	7.7

Undergrad include Non-degree Lifelong Undergraduates, Agricultural Technology, and English Language
 Masters include Nondegree Lifelong Graduate, Grad Certs and Post Docs
 Grad Prof include Osteopathic Medicine, Veterinary Medicine, and Human Medicine



Country	Total	Country	Total
Argentina	3	Malaysia	6
Australia	10	Mali	2
Bangladesh	4	Mauritius	1
Barbados	1	Mexico	8
Belgium	4	Moldova	2
Bosnia & Herzegovina	1	Morocco	1
Botswana	1	Nepal	4
Brazil	26	Netherlands	7
Bulgaria	4	Niger	1
Cameroon	2	Nigeria	3
Canada	49	Pakistan	7
Chile	5	Paraguay	1
China	197	Peru	5
Colombia	9	Philippines	4
Costa Rica	1	Poland	7
Cuba	1	Portugal	2
Cyprus	1	Romania	10
Czech Republic	6	Russia	18
Ecuador	1	Saudi Arabia	1
Egypt	5	Senegal	1
Ethiopia	1	Serbia & Montenegro	5
Finland	3	Sierra Leone	1
France	31	Singapore	3
Germany	34	South Africa	6
Ghana	1	Spain	13
Greece	8	Sri Lanka	5
Guatemala	2	Sudan	1
Hong Kong	6	Sweden	4
Hungary	3	Switzerland	2
India	86	Syria	1
Indonesia	5	Taiwan	18
Iran	8	Tanzania	1
Ireland	4	Thailand	6
Israel	7	Trinidad & Tobago	3
Italy	8	Tunisia	1
Jamaica	1	Turkey	20
Japan	45	Uganda	2
Jordan	3	Ukraine	5
Kazakhstan	1	United Kingdom	27
Kenya	4	Uruguay	2
Korea	225	Venezuela	3
Kuwait	1	Vietnam	3
Latvia	1	Zambia	2
Lebanon	1	Zimbabwe	5
Malawi	2	Total	822

INTERNATIONAL SPONSORED STUDENTS BY COUNTRY

ACADEMIC YEAR (FALL 05 – SUMMER 06)

The figures below reflect the distribution of international sponsored students who are studying at MSU on various US and non-US scholarships. The largest percentages of students are sponsored by the US Department of State's Fulbright Commission, the Royal Embassy of Saudi Arabia, the Embassy of the State of Kuwait, the Government of Kazakhstan's Bolashak Scholarship, and the Aramco Services Company.

Country	Total		
Angola	1	Korea, South	3
Argentina	1	Kuwait	20
Azerbaijan	1	Malawi	2
Belarus	1	Malaysia	16
Botswana	1	Mexico	4
Brazil	3	Morocco	1
Burkina Faso	1	Mozambique	2
Cambodia	1	Namibia	1
Chile	1	Netherlands	1
Colombia	1	Pakistan	23
Czech Republic	1	Peru	4
Dominican Republic	1	Philippines	4
Egypt	2	Portugal	1
Eritrea	1	Qatar	1
Ghana	2	Rwanda	1
Greece	1	Saudi Arabia	45
Guatemala	4	South Africa	4
Honduras	1	Taiwan	1
India	1	Thailand	17
Indonesia	3	Trinidad and Tobago	1
Iraq	1	Turkey	11
Israel	1	Ukraine	1
Jamaica	1	United Arab Emirates	3
Japan	1	Uruguay	1
Jordan	7	West Bank	2
Kazakhstan	25	Zambia	3
Kenya	4	Total	69